



# PACKALL

PackAlliance:  
European alliance for innovation training  
& collaboration towards future packaging

Linking **Academy** to **Industry**.

## Training program: modules

- **Eco-design & novel manufacturing processing**
  - New materials and biomaterials
  - Citizen and Consumer Engagement
  - Residue management and valorisation



Co-funded by the  
Erasmus+ Programme  
of the European Union

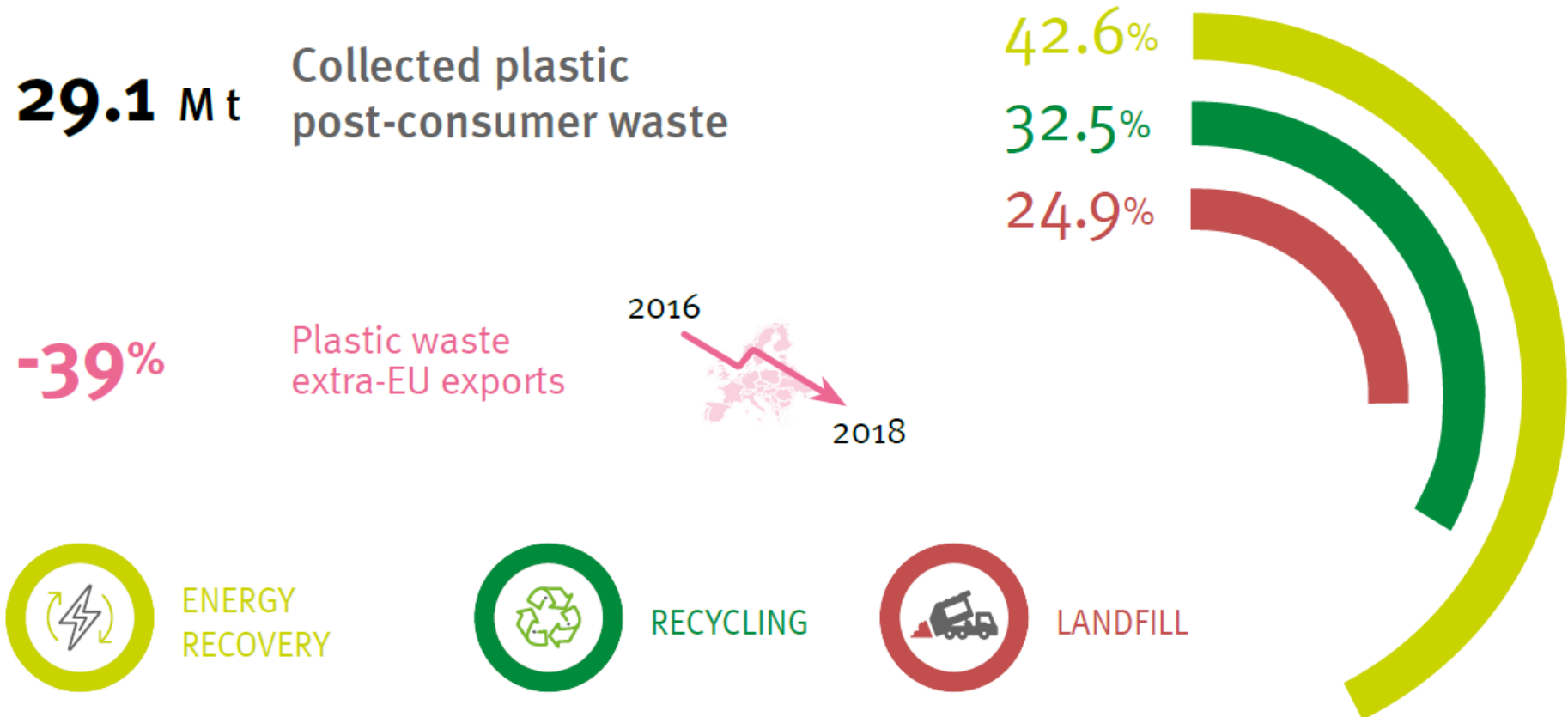
This project has been funded with support from the European Commission.  
This publication [communication] reflects the views only of the author, and the Commission cannot be held responsible for any use which may be made of the information contained therein.





# Plastic recycling: current situation in Europe

## PLASTIC POST-CONSUMER WASTE TREATMENT



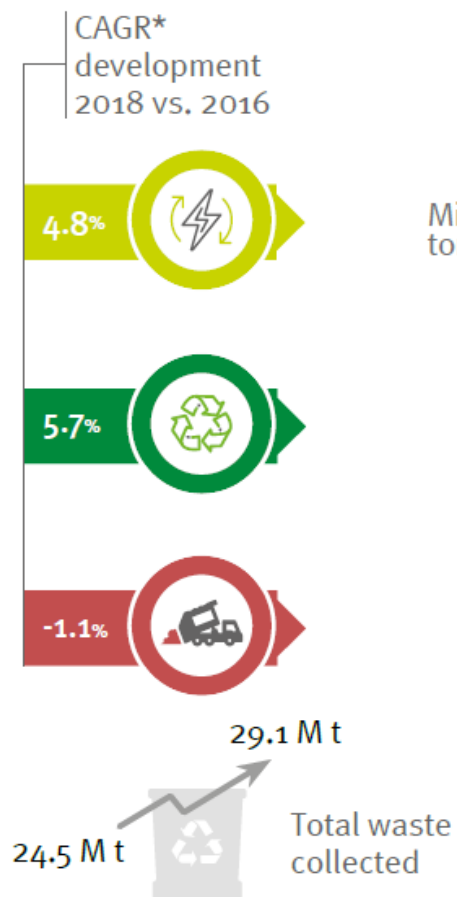
Source: PlasticsEurope

In 2018, 29.1 million tonnes of plastic waste were collected in the EU28+NO/CH in order to be treated. Plastic waste exports outside the EU have decreased by 39% from 2016 to 2018.

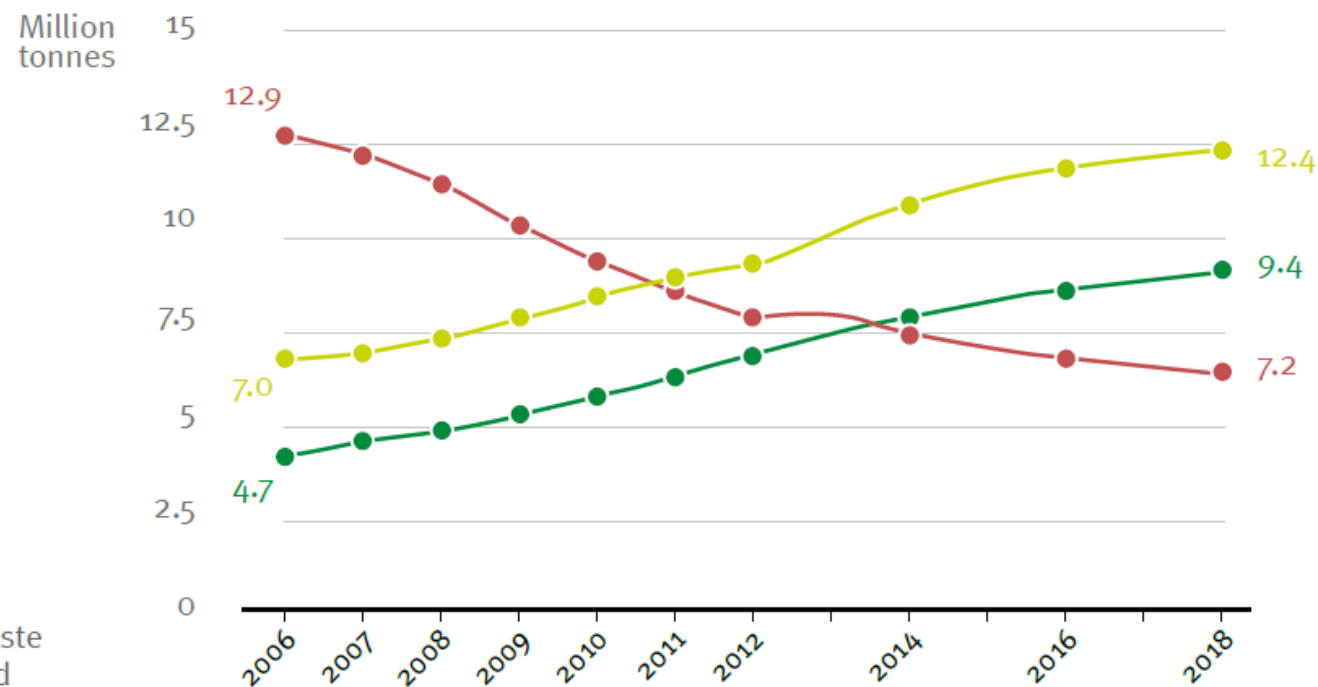
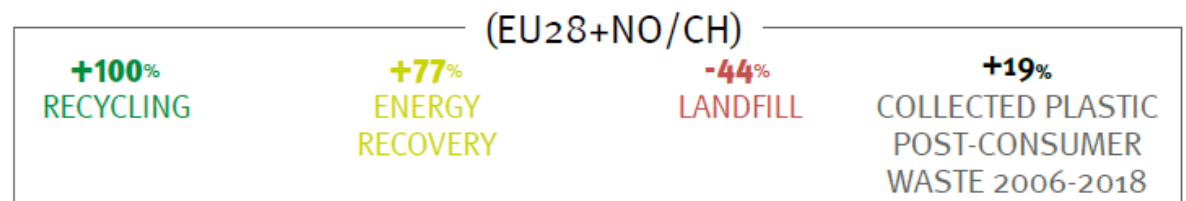
## PLASTIC POST-CONSUMER WASTE TREATMENT

Since 2006, the amount of plastic waste sent to recycling has doubled. However, 25% of plastic post-consumer waste was still sent to landfill in 2018

Recycling can be inside and outside the EU)



\* Compound Annual Growth Rate is the mean annual growth rate over a specific period of time

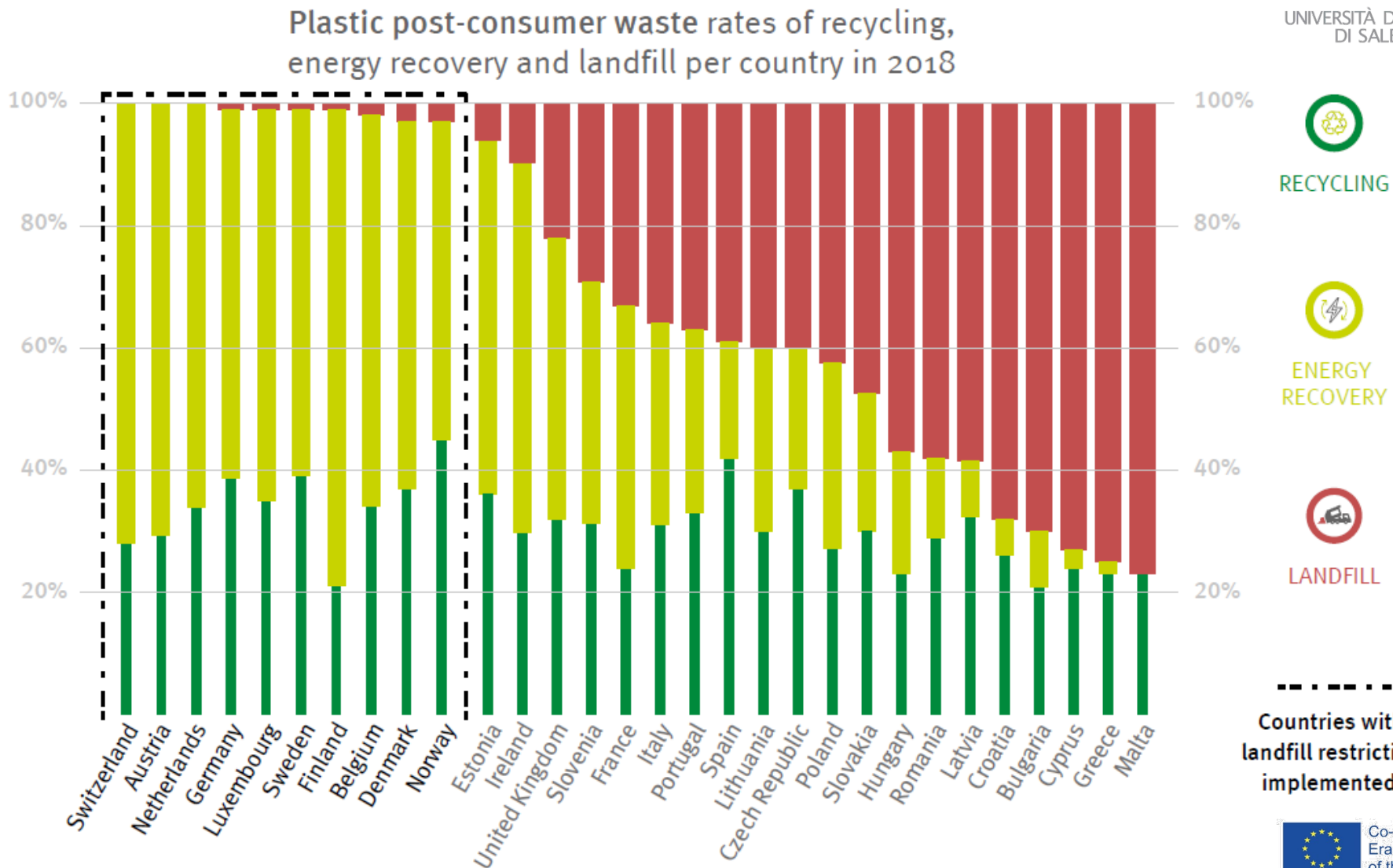




UNIVERSITÀ DEGLI STUDI  
DI SALERNO

## PLASTIC POST-CONSUMER WASTE TREATMENT

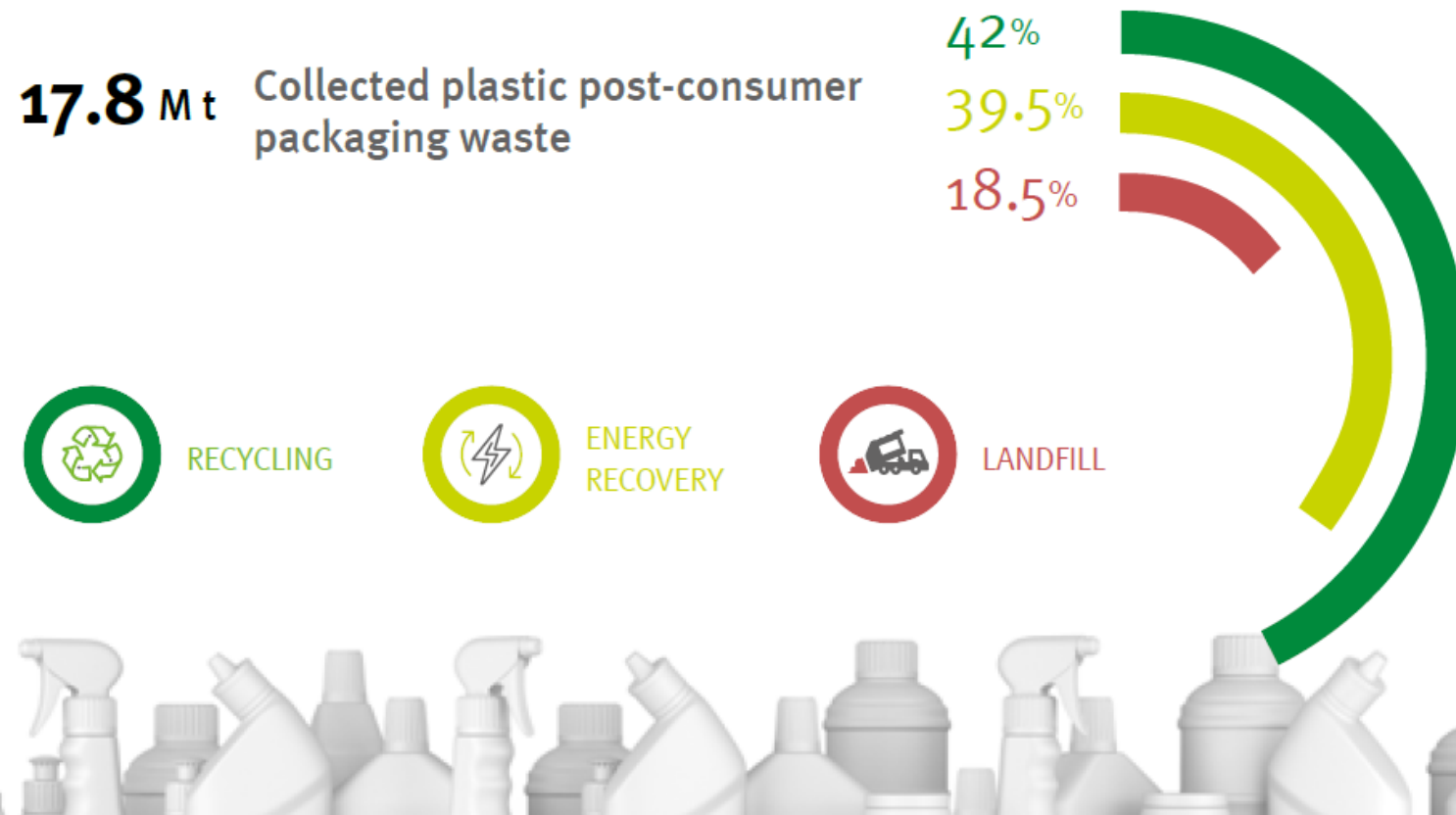
Countries with landfill restrictions of recyclable and recoverable waste have, on average, higher recycling rates of plastic post-consumer waste.



## PLASTIC PACKAGING POST-CONSUMER WASTE TREATMENT

Plastic PACKAGING\* waste treatment in 2018 (EU28+NO/CH)

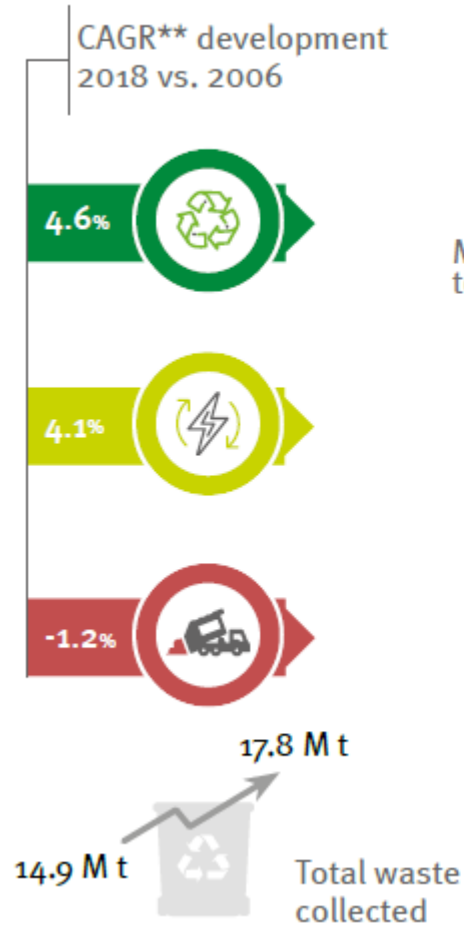
In 2018, 17.8 million tonnes of plastic post-consumer packaging waste were collected in order to be treated.



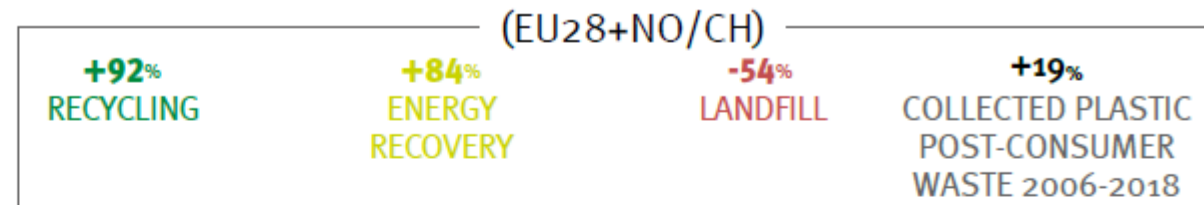


## PLASTIC PACKAGING POST-CONSUMER WASTE TREATMENT

2018 data show a positive trend for recycling, however more than 18% of the waste is still sent to landfill.



### 2006-2018 evolution of plastic PACKAGING\* waste treatment (EU28+NO/CH)





## PLASTIC PACKAGING POST-CONSUMER WASTE TREATMENT

Recycling rates of plastic packaging waste in Europe range between 26% and 52%.

This wide range can be explained by differences in collection schemes, available infrastructure and consumer behaviour.



On average, the 42% recycling of plastic packaging represents an increase of 1.2 points versus 2016, in particular thanks to improved waste collection.

The new Directive (EU) 2018/852 on Packaging and Packaging Waste sets higher recycling targets per material (**50% for plastic packaging by 2025 and 55% by 2030**), together with a new calculation method of recycling performances.





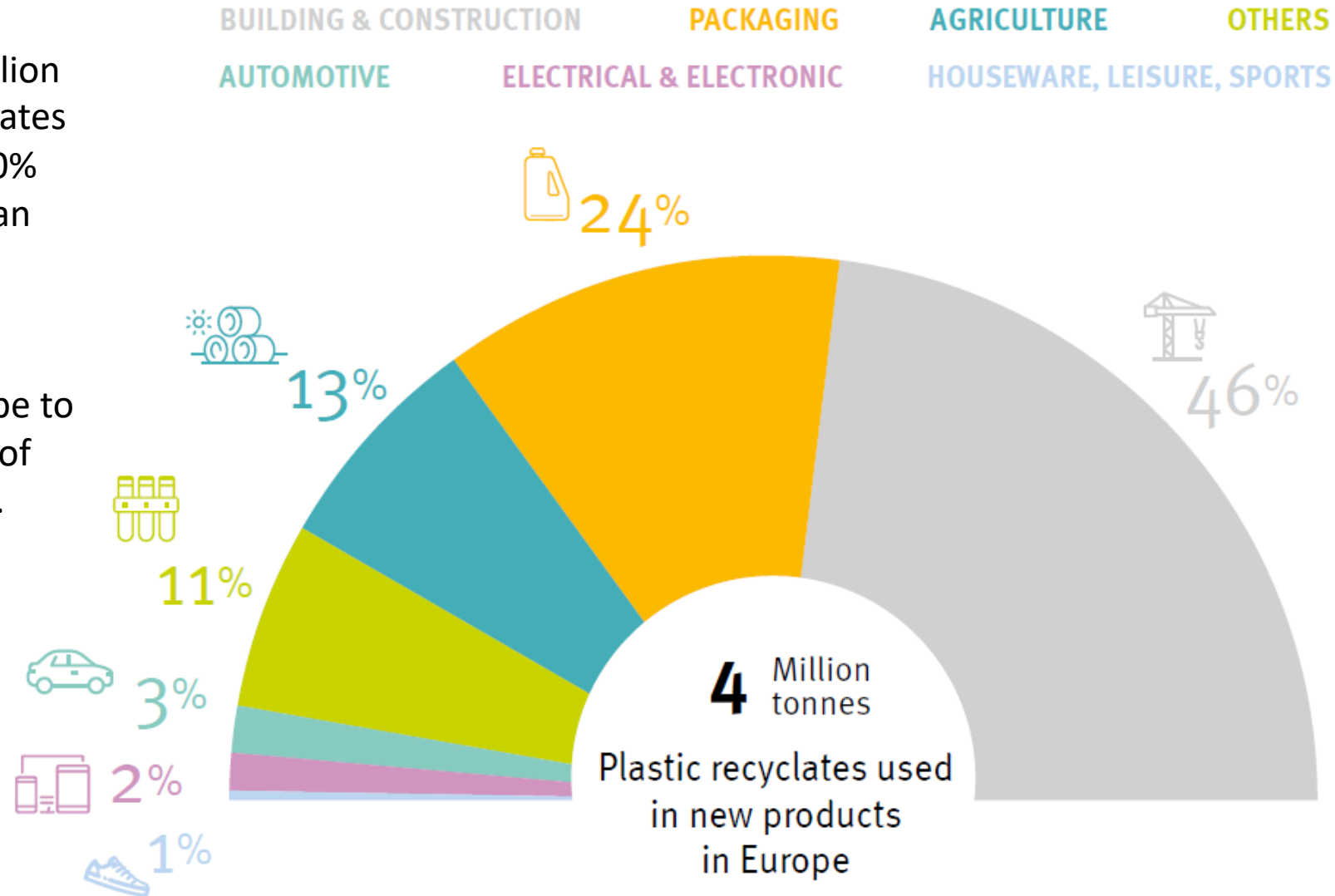
END-OF-LIFE PRODUCTS



In 2019, close to 5 million tonnes of plastic recyclates were produced in European recycling facilities.



In 2018, from the 5 million tonnes of plastic recyclates produced in Europe, 80% re-entered the European economy in order to manufacture new products. The rest was exported outside Europe to re-enter other regions of the world's economies.





# PACKALL

PackAlliance:  
European alliance for innovation training  
& collaboration towards future packaging

## Linking Academy to Industry.



UNIVERSITÀ DEGLI STUDI  
DI SALERNO



Copyright: CC BY-NC-SA 4.0: <https://creativecommons.org/licenses/by-nc-sa/4.0/>

With this license, you are free to share the copy and redistribute the material in any medium or format. You can also adapt remix, transform and build upon the material.

However only under the following terms:

**Attribution** — you must give appropriate credit, provide a link to the license, and indicate if changes were made. You may do so in any reasonable manner, but not in any way that suggests the licensor endorses you or your use.

**NonCommercial** — you may not use the material for commercial purposes.

**ShareAlike** — if you remix, transform, or build upon the material, you must distribute your contributions under the same license as the original.

**No additional restrictions** — you may not apply legal terms or technological measures that legally restrict others from doing anything the license permits.



Co-funded by the  
Erasmus+ Programme  
of the European Union

This project has been funded with support from the European Commission.

This publication [communication] reflects the views only of the author, and the Commission cannot be held responsible for any use which may be made of the information contained therein.

